



Have your say

Kent and Medway

Domestic Abuse Strategy 2024–29

Public consultation 24 July - 9 October 2023

Find out more and tell us your views at:

www.kent.gov.uk/domesticabusestrategy

Your views matter to us



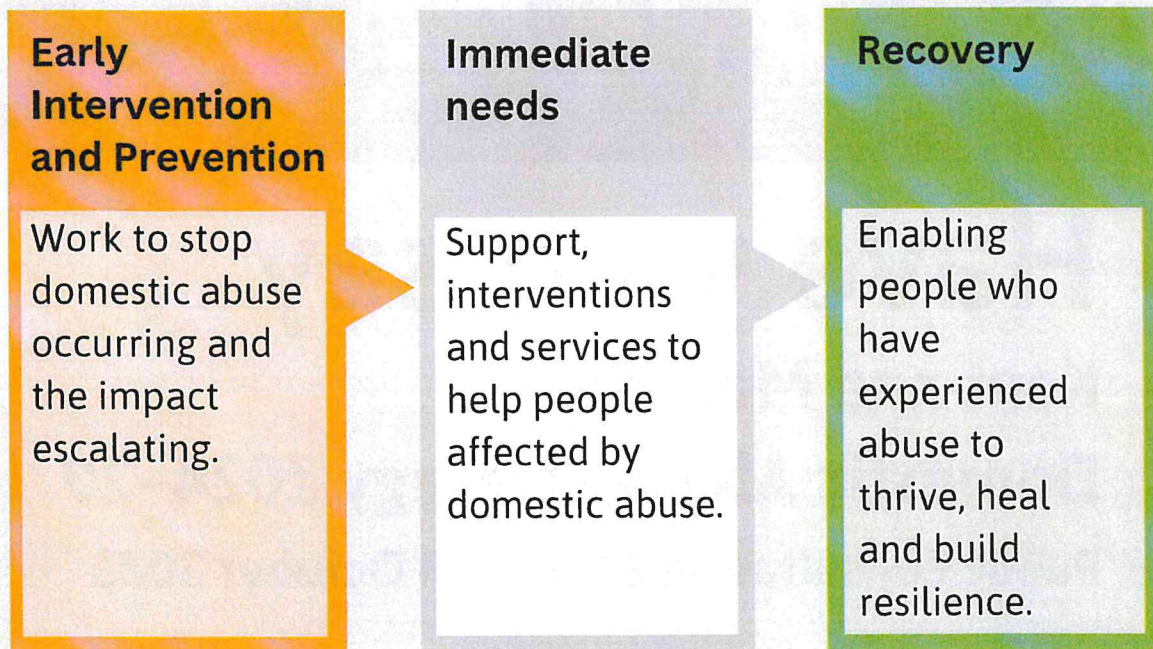
Kent and Medway

Domestic Abuse Strategy 2024–29

We are committed to preventing abuse and making sure that where domestic abuse takes place the people who are affected get the right support, quickly.

To create the strategy, we spoke to people about their experiences. We want to hear from you too.

Our 5-year plan includes:



Find out more and tell us your views at:
www.kent.gov.uk/domesticabusestrategy

Easy Read and British Sign Language versions are available.

If you require a different format or language, please email alternativeformats@kent.gov.uk or call 03000 421553 (text relay service number: 18001 03000 421553).